

M6...weekly programming thermostat

Weekly circulation digital programming thermostat with LCD screen, which has 6-event everyday. Manual mode and programme mode could be selected. The thermostat is recommended for control of electric heating devices or on/off valve actuator used in hydronic floor heating.

Selection Table:

Model	Current	Application
M6.703	3A	Built-in & floor sensor, floor limit sensor, weekly programming
M6.716	16A	Built-in & floor sensor, floor limit sensor, weekly programming
M6.723	3A	Built-in & floor sensor, floor limit sensor, weekly programming, A potential-free output

Parameter:

- Voltage: 220V/230V
- Power consumption: 2W
- Setting range: 5~90°C (can adjust to 35-90°C)
- External limitation: 5...60°C (factor setting: 35°C)
- Switch differential: 0.5-10°C adjustable
- factory setting: ± 1°C
- Ambient temperature: -5~50°C
- Protective housing: IP20
- Housing material: anti-flammable PC

User operation:

- 1) "On" Power on/off.
- 2) At clock-controlled programme mode, press "▲" or "▼" enter temporary control.
- 3) UP "▲", DOWN "▼" to adjust the temperature
- 4) Press menu "☰" & UP "▲" for 5 seconds, then enter clock set, choose modified item by pressing menu "☰", press UP/DOWN "▲▼" to modify the date and clock, then switch off to quit.
- 5) Press menu "☰" to choose manual mode or programme mode,
- 6) set temperature and clock display alternately, room temperature can be read out directly.
- 7) press both "▲" "▼" for five seconds to engage/disengage key-lock function key-lock on shows "🔒" ("🔒" this symbol disappear shows unlock)

Function:

- ☰ Manual mode
- 🕒 Clock-controlled programme mode
- 🔊 Heating on
- ⚙️ Wake-up, event 1
- 🏠 Leave(am), event 2
- 🏠 Return(am), event 3
- 🏠 Leave(pm), event 4
- 🏠 Return(pm), event 5
- 🌙 Sleep, event 6

Programming:

Press Menu key for 5 seconds to start programming

Key	Event	Symbol	Time	Modify	Temp.	Modify
☰	1	☰	06:00	Δ	20°C	Δ
	1-5	☰	08:00	▽	15°C	▽
	3	☰	11:30	Event	15°C	
	4	☰	12:30	time	15°C	
	5	☰	17:00		22°C	
	6	☰	22:00		15°C	
☰	1	☰	08:00		22°C	
	2	☰	23:00		15°C	

You can download the modify flash in our website (www.menred.com)

Advanced setting (qualified person preferred):
Usually finished at mounting thermostat.
Press ☰ key simultaneously pressing power on key
When in power off state.

1ADJ: Temperature calibration

Press + or - key to adjust present checked value
Adjustable scale: ± 0.9°C
Re-press menu key to enter to next step.



2SEN: Sensor mode

Press + or - key to choose sensor
IN: built-in, OUT: floor sensor, ALL: both
Sensors, floor sensor is the limit sensor
Re-press menu key to enter to next step.



3LIT: Modify limitation value

Press + or - key to modify the temp. Limit value
Limitation range: 5~60°C
Re-press menu key to enter to next step.



4DIF: switch differential setting

Press + or - key to change switch differential
Setting range: 0.5~10°C
Re-press menu key to enter to next step.



5LTP: Start anti-frozen function in power off

Press + or - key to change the current anti-frozen function
Re-press menu key to enter to next step.



6PRG: set day off mode

Press + or - to choose day off
5/2 day mode, 6/1 day mode,
7 day mode and quit
Re-press menu key to enter to next step.



7RL: Potential-free output, and main power output in same/different way.

Press + or - key to change the current linkage state.
00 in same way, 01 in different way.
Re-press menu key to enter to next step.



8DLY: Delay time of potential-free output

Press + or - key to change linkage delay time
Range: 0-5min
Re-press menu key to enter to next step.



9HT: Max. Temperature setting

Press + or - key to change the Max. value
Range: 35-90°C
Re-press menu key to enter to next step.



AFACT: Reset to factory setting

Reset to factory setting
Switch off for saving



HVAC CONTROLS PRODUCTS

DS/MRD-06-091119

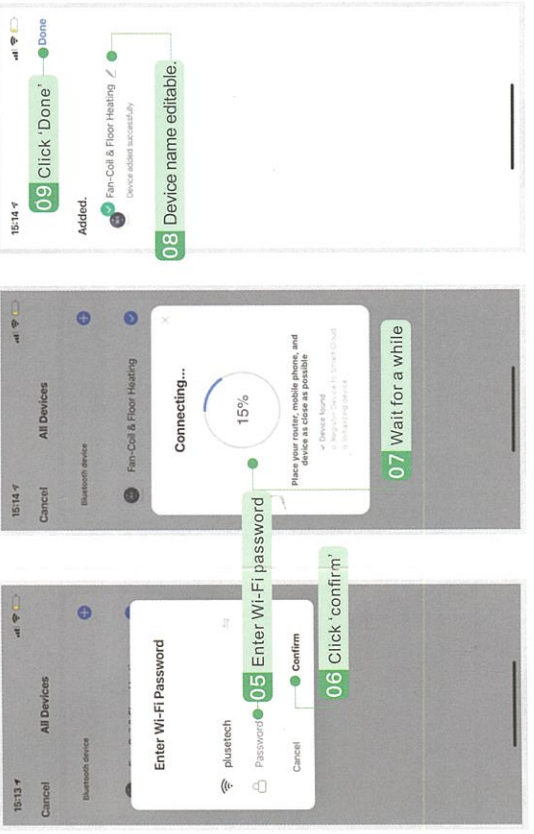
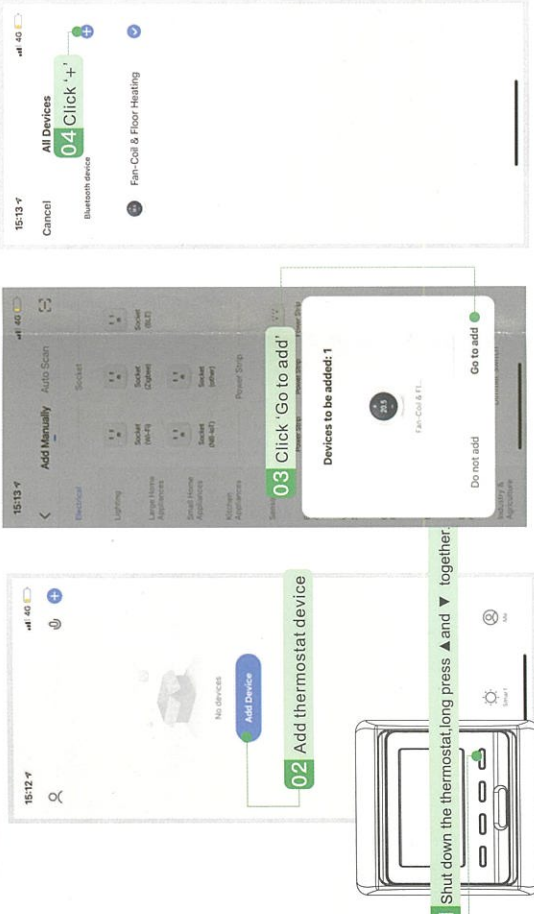
1 Login & Sign Up



- 1 Scan the QR code above or go to the App store to download the Smart Life.
- 2 Complete the registration and If you have an account, you can log in directly.

2 Bluetooth Mode

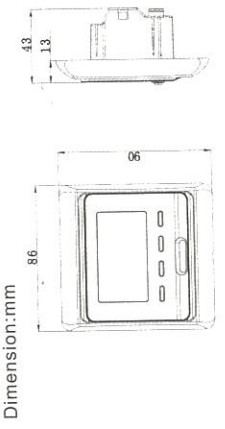
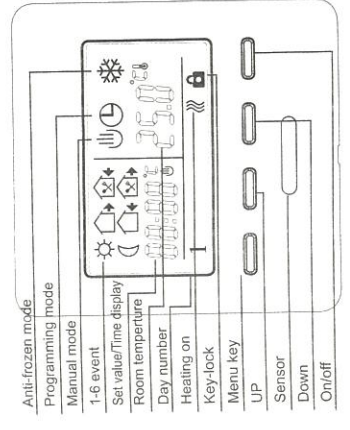
*Please turn on the Bluetooth of your phone in advance.



M6 ... weekly programming thermostat

Sensor Failure
 E0: Built-in sensor short-circuited or disconnected.
 E1: External sensor short-circuited or disconnected.
 When shows E0/E1 error, thermostat must be checked till the error is eliminated

Display symbols

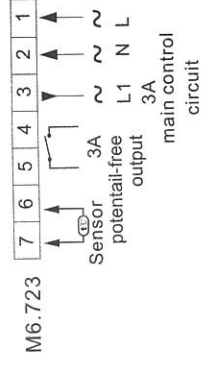
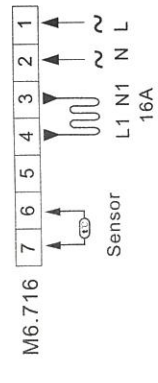
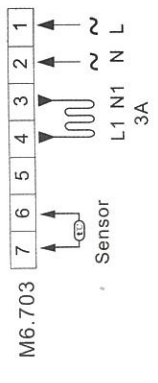


Mounting steps:

- 1 Release the front cover by inserting a screwdriver into bottom crack.

- 2 Take the backing plate apart according to the following diagram.
- 3 Mounted the backing plate in the wall socket by screwdriver.

- 4 After connect wires (see right diagram), the thermostat mounts on the backing plate and remounted the cover and frame.



Connecting Diagram

Attention:
 The thermostat which connect the electric heating device is apply to full load (3200W) heating cable in 2500mm height above sea level, and the rated power of external load should be less than or equal to 80% rated power thermostat when in the 2500mm to 4200mm height.

HVAC CONTROLS PRODUCTS

DS/IMRD-06-091119

3 Device sharing



4 App control interface

